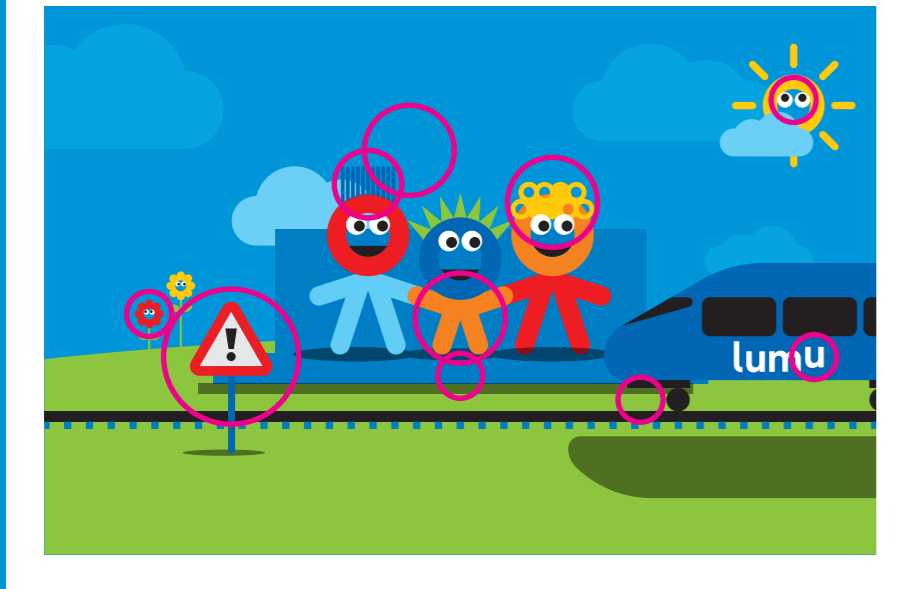
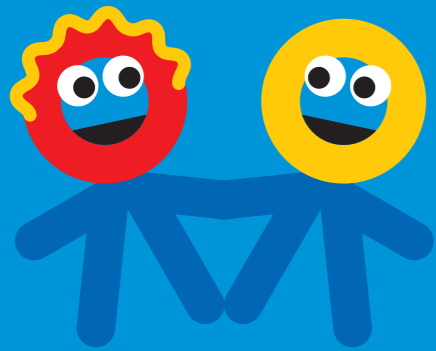


solutions



where do we go?

- Edinburgh
- Morpeth
- Newcastle

Did you recognise all the places on our route?

- Stevenage
- London

true or false?

1. **False**
Cows can be dangerous if they wander onto the track (but not because of their smell!).
2. **True**
All sorts of trains have to run at night, for example freight trains.
3. **True**
Lumo trains are electric and modern, so they're quiet.





Did you spot them all?

1. Dogs running off their lead could run onto the tracks.
2. If you're listening to loud music, you might not hear a passing train.
3. Kites can get tangled up in overhead electrical wires.
4. Skateboarding near a level crossing or on a platform can cause accidents.
5. A drone could crash into a fast train.
6. Playing football near the railway could mean the ball rolls onto the tracks.
7. Bicycles and scooters left on the platform can be hazardous obstacles in the way of other people.
8. Some tracks are electrified and can cause serious harm.

word search

W	I	C	N	E	W	C	A	S	T	L	E
F	Y	R	P	D	E	P	Z	N	H	O	D
N	A	O	L	R	Y	F	N	A	U	D	I
R	T	S	A	F	E	T	Y	J	V	Y	N
C	K	S	T	A	I	R	S	M	T	Z	B
L	I	I	F	S	X	A	Y	A	R	V	U
Y	G	N	O	L	Y	C	L	J	A	N	R
Q	E	G	R	O	D	K	L	I	I	E	G
L	Y	L	M	N	R	S	T	A	N	D	H
R	A	I	L	D	K	T	J	S	Q	E	G
X	L	U	M	O	U	E	B	U	L	T	K
L	G	Y	R	N	W	R	P	G	F	B	T



lumo

championing a **safer railway**
with Rail Safe Friendly RSF