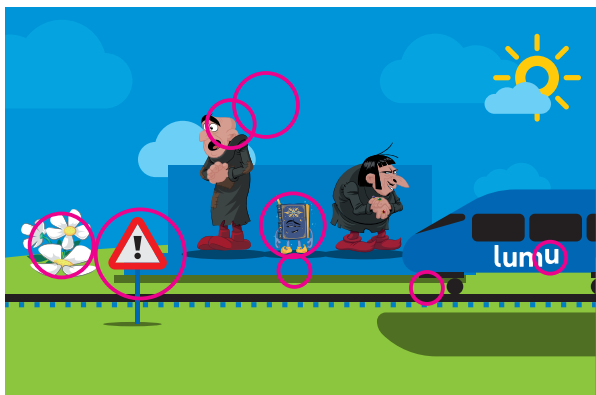
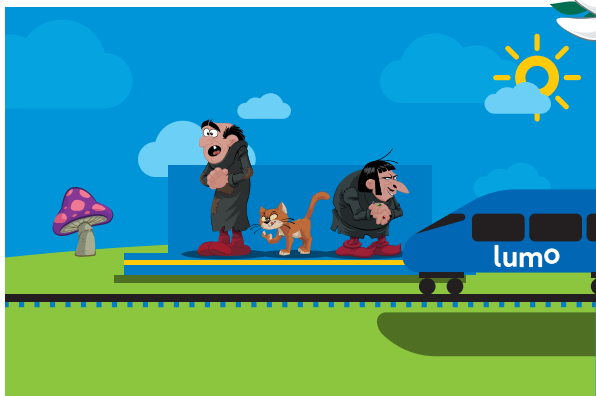


# lumo SOLUTIONS



Did you help Smurfette get to the station 🚉 avoiding all the level crossings 🚧, mushrooms 🍄, & runaway Azrael 🐈?



## where do we go?

Edinburgh

Morpeth

Newcastle

Stevenage

London

Did you recognise all the places on our route?

## true or false?

### 1. FALSE

Leaves on the line cause more signal failures than escaped smurfs.

### 2. TRUE

Trains run 24 hours a day, every day, so there's never a safe time to play near the tracks.

### 3. TRUE

Lumo trains are much quieter than many other trains on the line.



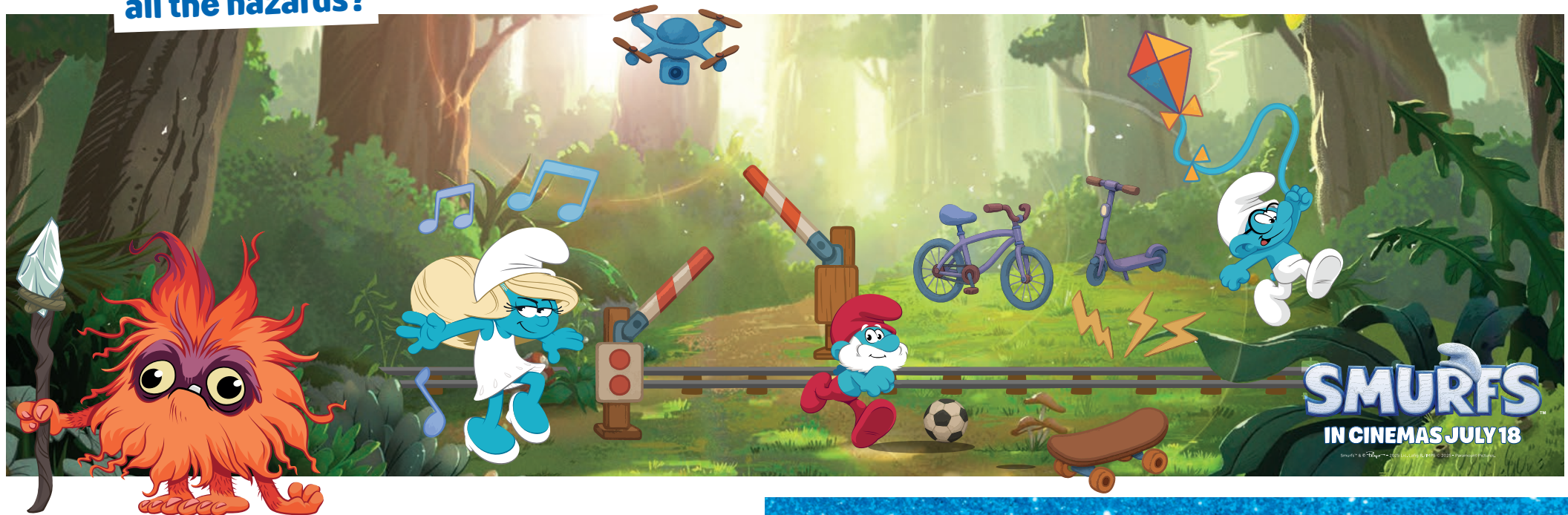
# SMURFS

IN CINEMAS JULY 18

Smurfs™ & © 2025 Lumo Ltd. All rights reserved. © 2025 Paramount Pictures.



can you find  
all the hazards?



## Did you spot them all?

1. If you're listening to loud music, like Smurfette, you might not hear a passing train.
2. Kites can get tangled up in overhead electrical wires.
3. Skateboarding near a level crossing or on a platform can cause accidents.
4. A drone could crash into a fast train.
5. Playing football near the railway, like Papa, could mean the ball rolls onto the tracks.
6. Bicycles and scooters left on the platform can be hazardous obstacles in the way of other people.
7. Some tracks are electrified and can cause serious harm.

## word search

D	W	M	U	J	R	G	R	B	T	F	A
M	C	U	D	K	W	C	Q	O	F	N	Z
R	K	S	A	L	U	Y	M	V	K	R	R
O	Y	H	G	A	R	G	A	M	E	L	A
F	C	R	O	S	S	I	N	G	I	Y	E
T	W	O	N	C	P	F	U	U	N	T	L
A	H	O	P	F	L	A	G	M	I	E	N
L	N	M	I	S	X	U	P	S	A	F	I
P	T	R	A	C	K	S	M	A	R	A	U
W	W	P	B	I	D	I	S	O	T	S	H
Y	E	L	L	O	W	L	I	N	E	F	Q
S	M	U	R	F	E	T	T	E	R	Z	Z

## Did you find them all?

1. Platform
2. Yellow Line
3. Safety
4. Lumo
5. Train
6. Azrael
7. Crossing
8. Tracks
9. Smurfette
10. Papa
11. Mushroom
12. Gargamel



**lumo**

championing a **safer railway**  
with Rail Safe Friendly 